

# Coldglue pumps

## Series CXT

The reliable and robust CXT piston pumps of Robatech to feed dispersion-type adhesives and other free-flowing cold adhesives.



**Robatech**

## Application

The CXT pump systems are used to feed cold liquids of low and medium viscosity. They are suitable to feed dispersion adhesives (water-soluble coldglues) and Polyurethane coldglues. Three different appliance variants with three different pump types are available.

## Appliance variants

### – Tank devices

Pump and filter are installed on a 24 litre tank. Refilling of the adhesive is effected through the flap opening. The storage tank is made from stainless steel.

### – Bucket pumps

Pump and filter are mounted on a round cover with filling flap. The complete unit is placed on top of a bucket or container holding the adhesive.

### – Wall-mounted pumps

Pump and filter are fitted to a mounting bracket. A flexible hose with suction filter is fastened to the pump inlet. The hose end with filter can be placed in a bucket or coupled directly to a 1,000 litre container.



Tank device



Bucket pump

## Function

From the storage container, the adhesive is drawn through a coarse filter into the piston pump operated by compressed air. The adhesive feeding pressure and thereby the feed quantity is adjusted via the pump entry pressure. A different adhesive pressure results depending on the pump transmission ratio. The double-acting pump with contactless electronic change-over control generates an even adhesive pressure with absolute minimal pulsation. A large-surface filter at the glue exit ensures that no dirt particles can block hoses and applicator heads.

## No pulsation

The double-acting pneumatic piston pumps convey the adhesive in both the upward and downward movement. In combination with the electronic change-over control this results in a constant glue pressure free of pulsation, even at a low operating pressure.

## Chemical resistance

The CXT pumps are designed for a high chemical resistance. All metallic pump components coming into contact with the adhesive are made from stainless steel.

## Double filter system

The CXT pumps are equipped with a double filter system. A coarse filter at the suction end prevents foreign particles from reaching the pump system without decrease of the feeding capacity. The large-surface fine filter at the pump exit protects the application system with hoses and applicator heads against smallest foreign and dirt particles. The filters are readily accessible and easy to clean. The exit filter features a cock for fast draining of the glue pressure for service and maintenance work.



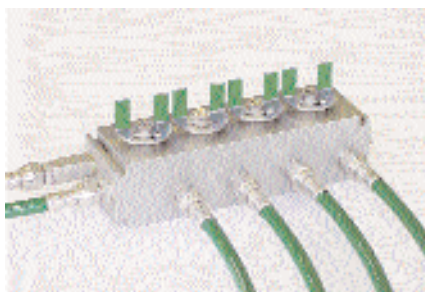
Wall-mounted pump

### Automatic quantity control

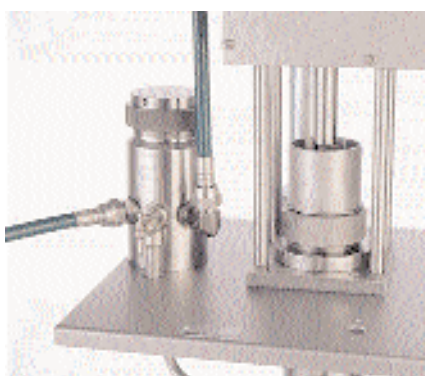
This guarantees a constant adhesive application also in case of rapid and major speed changes. The product speed is detected by an encoder and converted into an analogue electrical signal by the pattern control. From this signal the electro-pneumatic converter generates a pneumatic pressure which serves to activate the quantity controller. The adhesive pressure and thereby the applied quantity alters depending on the entry pressure at the quantity controller. Robatech offers two types of controllers with a transmission ratio (air pressure : glue pressure) of 1:1 and 1:5.

### Distributor with flushing device

The distributor features 4 cocks for manual switching over. A simple manipulation permits to switch over between flushing agent and adhesive. This means that application heads which are not required can be flushed individually without need to clean the entire system.



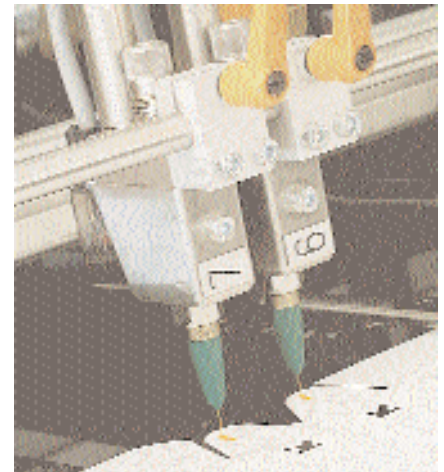
Glue distributor with flushing device



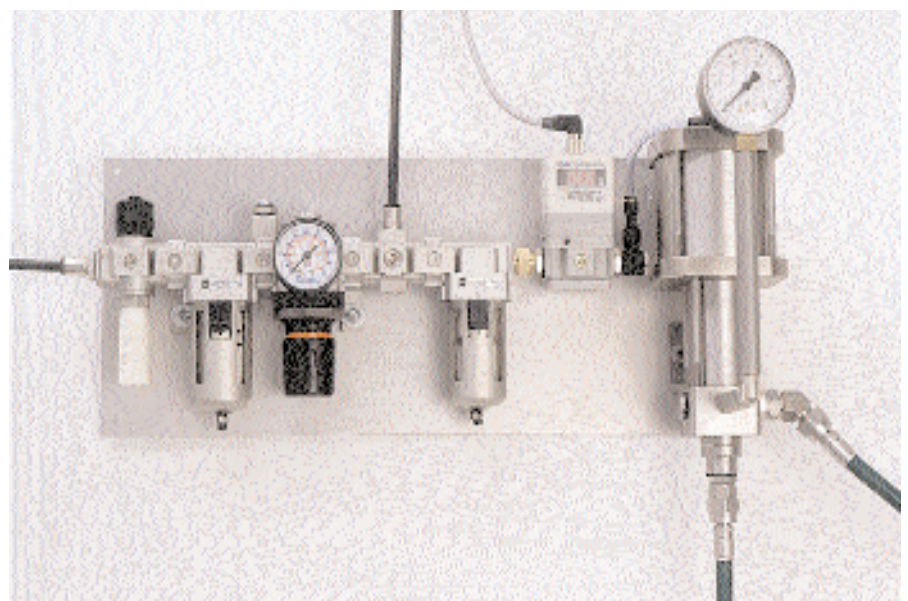
Readily accessible fine filter

### Your advantages

- Wide application spectrum
- User-friendly
- Long life and high reliability
- Compact and light
- Minimal pulsation
- Precise glue application
- No contamination thanks to two filters
- Metal parts from durable stainless steel
- Large range of accessories



Electrical applicator heads ECXM with 500 impulses per second



Quantity control unit for 1 to 25 bar adhesive pressure



Suction filter in the bucket pump

### Accessories

A multitude of accessories permit to adapt the coldglue pumps optimally to further requirements:

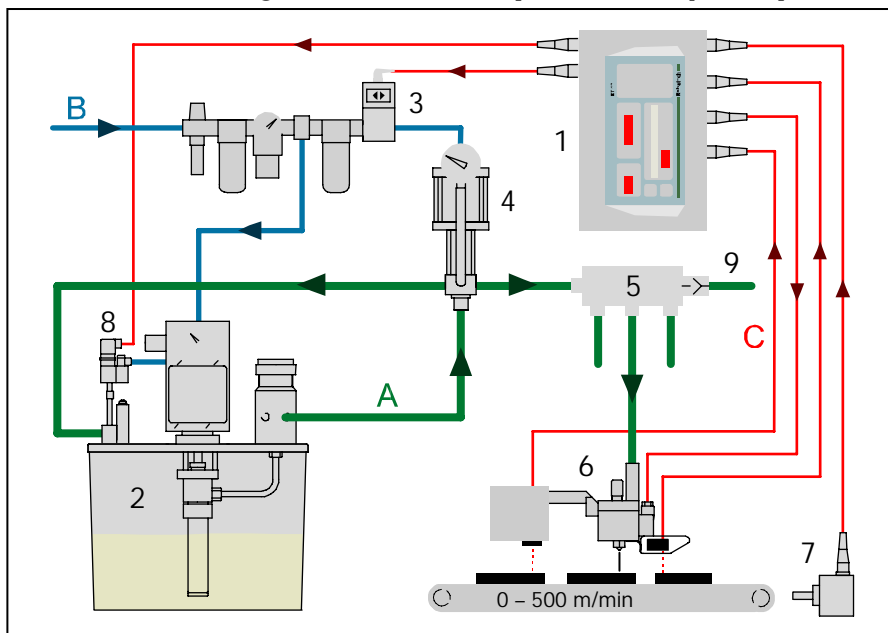
- Coldglue hoses
- Glue fittings
- Applicator heads
- Pattern controls
- Pressure drainage valves
- Adhesive quantity controllers
- Trolley
- Additional glue filters
- Distributors with flushing device

## Technical data

<b>Pump types:</b>	<b>CXT 105</b>	<b>CXT 112</b>	<b>CXT 210</b>
<b>Glue pressure</b>	5...30 bar	12...72 bar	10...60 bar
<b>Pump capacity max.</b>	6 kg/h	6 kg/h	90 kg/h
<b>Viscosity</b>	100...50,000 mPas	100...50,000 mPas	100...50,000 mPas
<b>Transmission Air:Glue pressure</b>	1:5	1:12	1:10
<b>Working pressure</b>	1...6 bar, continuously adjustable		
<b>Compressed-air supply</b>	6 bar, not oiled, filtered		
<b>Air consumption</b>	11,4 l/min	27.4 l/min	384 l/min
<b>Electrical supply</b>	230 Volt AC – 50/60Hz – 40 Watt		

<b>Pump variants:</b>	<b>Tank devices</b>	<b>Bucket pumps</b>	<b>Wall pumps</b>
<b>Available pump variants</b>	CXT 105 and CXT 112	CXT 105, CXT 112 or CXT 210	CXT 210
<b>Tank content</b>	24 litre	–	–
<b>Feed opening</b>	305 x 97.5 mm	332 x 90 mm	–
<b>Max. bucket diameter</b>	–	380 mm	–
<b>Weight</b>	15 kg	CXT 105/112: 12 kg CXT 210: 20 kg	19 kg

## Schematic drawing of an adhesive system with quantity control



- A Glue flow
- B Compressed air
- C Electrics
- 1 Pattern control
- 2 Coldglue pump
- 3 Proportional valve with air conditioning
- 4 Quantity controller
- 5 Distributor with flushing device
- 6 Applicator head with photocell and glue detection
- 7 Encoder
- 8 Pressure drainage valve
- 9 Flushing water connection

Robatech AG  
 Pilatusring 10  
 CH-5630 Muri / Switzerland  
 Phone +41 56 675 77 00  
 Fax +41 56 675 77 01  
 Email info@robatech.ch  
 Internet www.robatech.com

**Robatech**