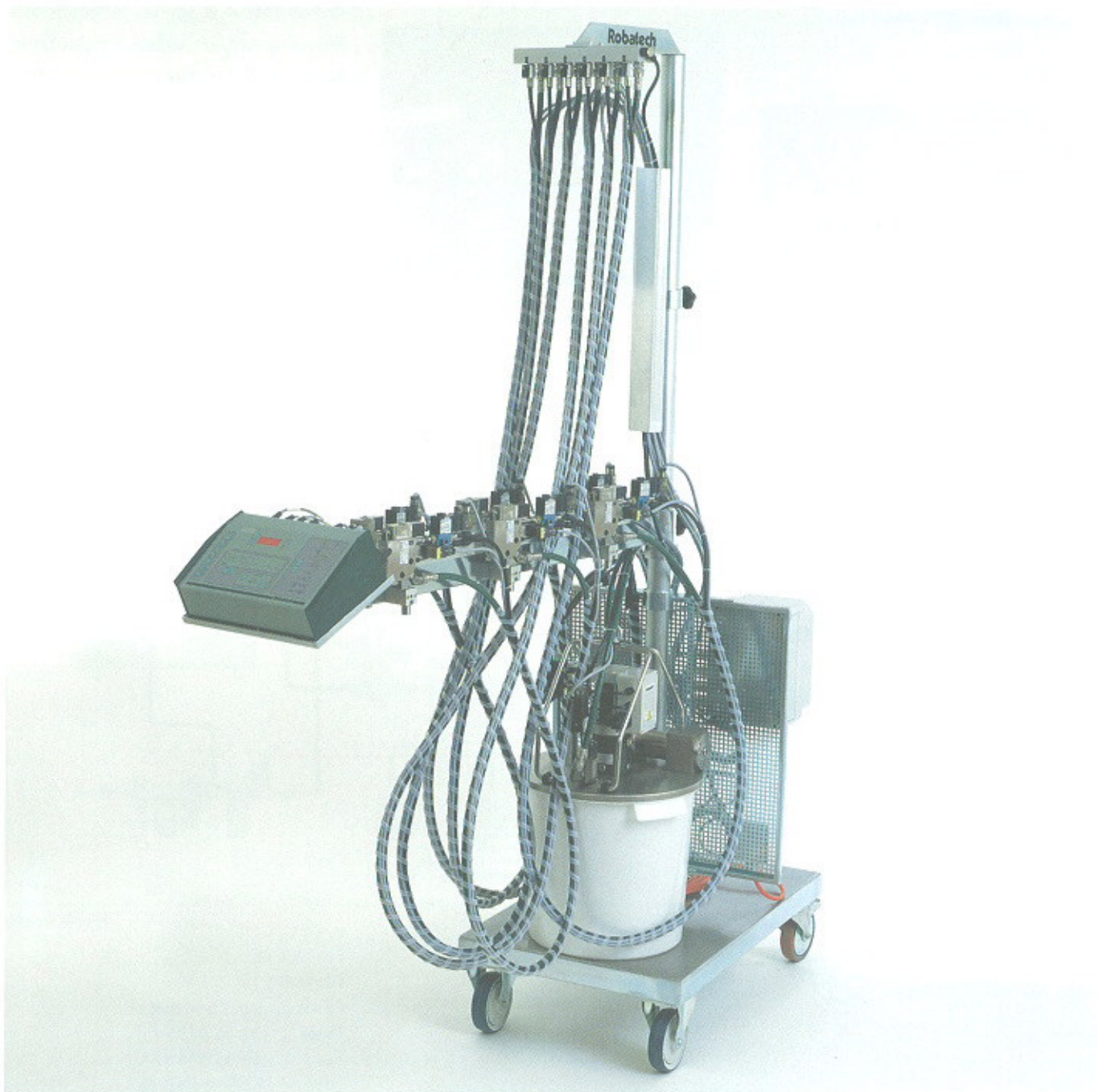


RO

Robatech
Glueing Technology

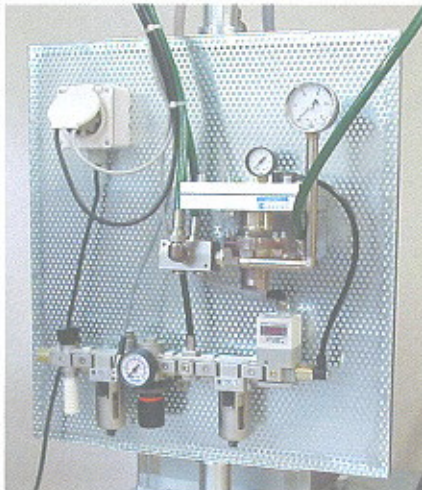
Mobile Coldglue trolley

The mobile coldglue trolley for the individual and rapid deployment in your production line. It features a pivoting console with the glue heads and the application control, and a movable base frame accommodating the bucket pump and pressure control.



Application

The coldglue trolley is used to apply cold liquids of low to high viscosity, in the main dispersion-type coldglues. Depending on the installed application head it is possible to use the appliance on machines operating a low or high speed. The maximum glue viscosity depends also on the installed application heads. In combination with the glue pressure controller the coldglue trolley is primarily used on folding-box glueing machines in the speed range from 20 to 600 m/min.



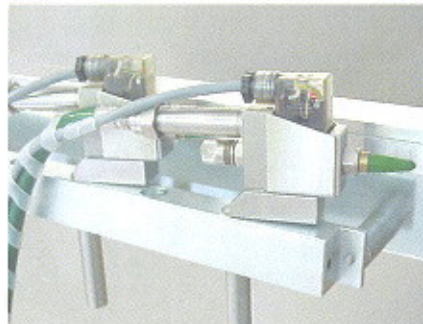
Glue pressure control and proportional valve

Bucket pump BP

The pump is placed directly on the different containers provided by the adhesive suppliers. The piston pump operated by compressed air draws the adhesive from the storage container through the coarse filter. The feed pressure and thereby the feed quantity are set with the operating pressure of the pump. The electronic change-over control without contact generates an even pressure without pulsation. The fine filter retains foreign particles before the adhesive reaches the glue hoses and application heads.

Application heads ECXM

The coldglue heads of «Series ECXM» operate electromagnetically. They serve to process dispersion glues up to an operating pressure of 30 bar in the low- to medium-viscosity range up to approx. 2,500 mPas. These coldglue heads enable fast dot and line applications at high machine speeds. They are particularly suitable for folding-box glueing machines, envelope machines, etc.



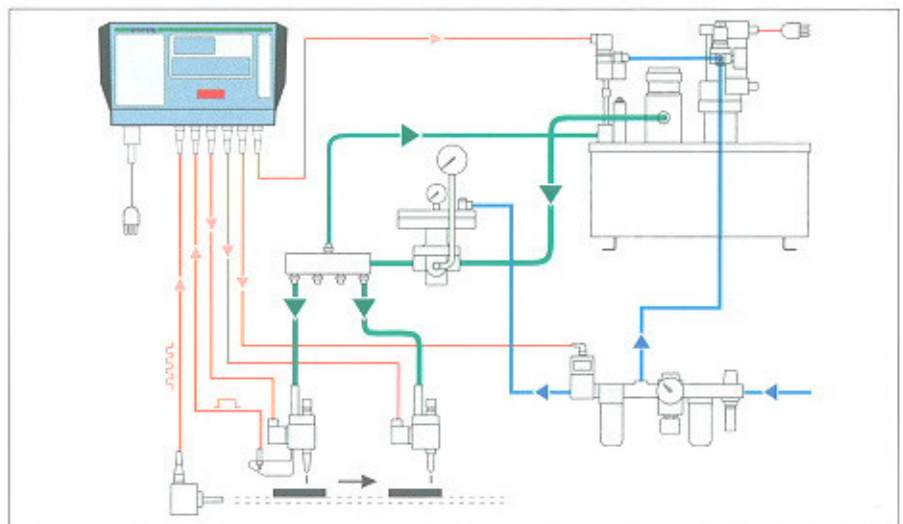
Electromagnetic application heads «ECXM»

Application heads ACX 101 VE

The application heads of «Series ACX» operate pneumatically. They serve to process aqueous coldglues as well as solvent-containing types of high viscosity with a glue pressure of up to 100 bar. They are used at small to medium machine speeds. Thanks to the shut-off slide it is possible to process very fast-curing coldglues without the glue drying out in case of a machine stop.

Glue pressure controller

A glue pressure controller is installed before the application heads to ensure a constant glue application also in case the machine speed varies. An encoder measures the machine speed and over the proportional valve this signal is converted into a pneumatic pressure. The subsequent pressure controller adjusts the glue pressure to the prevailing machine speed.



System drawing

Robatech AG
Pilatusring 10
CH-5630 Muri / Switzerland
Phone +41 56 675 77 00
Fax +41 56 675 77 01
Email info@robatech.ch
Internet www.robatech.com