

# RO

**Robatech**  
Glueing Technology

## Pumelt D280

### PUR hotmelt application system

For melting and pumping of reactive polyurethane hotmelts (PUR). Especially suitable for processing adhesive candles from 20 litre drums.



## Purpose

The model Pumelt D280 is designed to melt down reactive polyurethane hotmelts. Featuring a tank diameter of 312 mm, the appliance lends itself particularly well for the processing of adhesive blocks of candle shape with a volume of 20 litres.

## Special aspects

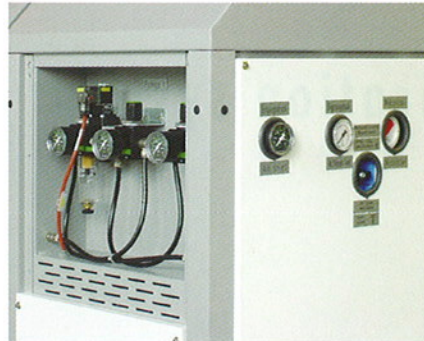
PUR hotmelts react with the air humidity. For this reason the entire adhesive system is sealed airtight and dry air is used in the tank as a blanket gas. The air is conditioned within the appliance and the tank cover is locked against unintentional opening. Continuous production is ensured by the intermediate storage tank. All parts coming into contact with the hotmelt are release-coated with FEP.

## Hotmelt feeding

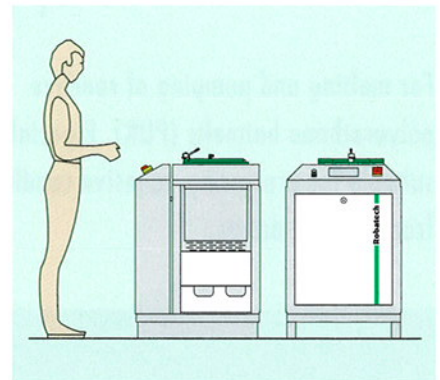
At option, with 1 or 2 gear pumps. Five pump types are available offering different feed quantities. The maximum feed pressure can be steplessly adjusted for each pump up to 100 bar. The pump turns either at a constant speed (revs.) or in proportion to the measured equipment speed. Two heating hoses can be connected directly to each pump.

## IICS control

The display and entry field of the ICS electronic with the schematic diagram of the appliance makes operation very easy. The current operation status is always indicated. Dedicated nominal and reduced temperatures can be allocated to up to 8 heating hoses and 8 application heads. The time switch clock and the possibility of a connection to a higher-ranking control are further characteristics of this control.



Pressure controller for system pressure



Size comparison

## Options and accessories

- Integrated application control for programming of glue patterns
- PROFIBUS and CANBUS communication interface
- Remote control, emergency-off switches, level sensors, etc.
- Accessories such as heating hoses, application heads, photoelectric cells, encoders, etc.



Tank cover with protective lock

## Technical data

Tank volume	36 litres
Melting capacity (guide value)	~ 40 kg/h
Number of gear pumps	1 or 2 gear pumps, 5 types
Feed quantity per pump	ZP1 = 22 kg/h, ZP2 = 44 kg/h, ZP3 = 88 kg/h ZP0.25 = 5.5 kg/h, ZP0.5 = 11 kg/h
Viscosity	100 – 100'000 mPas
Blanket gassing	with membrane-type compressed air drier
Operating temperature	20 – 160° C or 68 – 320° F
Electrical connection	400 Volt, 3LNPE, 50/60 Hz, max. 27 kW
Dimensions l x w x h	760 x 700 x 1160 mm
Weight	240 kg

Robatech AG  
Pilatusring 10  
CH-5630 Muri / Switzerland  
Phone +41 56 675 77 00  
Fax +41 56 675 77 01  
Email [info@robatech.ch](mailto:info@robatech.ch)  
Internet [www.robatech.com](http://www.robatech.com)