

RO

Robatech
Glueing Technology

Pumelt

Hotmelt Application Systems for PUR and other sensitive hotmelts

The new Application System line from Steinmeyer – modular and compatible
with Robatech Hotmelt System technology





PUR hotmelts in different shapes

Safe processing of PUR hotmelts

Moisture curing PUR hotmelts need special handling as they react with humidity.

Unlike conventional hotmelts, PUR must not come in contact with ambient air.

Different producers supply PUR hotmelts in sealed packaging, such as blocks, tins, drums or aluminium bags.

As soon as the PUR hotmelt comes in contact with the ambient humidity the cross-linking reaction starts.

The STEINMEYER PUMELT-application systems are designed and constructed to meet all these special requirements. The tanks are hermetically sealed. The refilling of the tank during the working process is safe as an over pressure system avoids humid air getting in contact with the molten PUR.



The heavy steel cover seals the tank against humidity

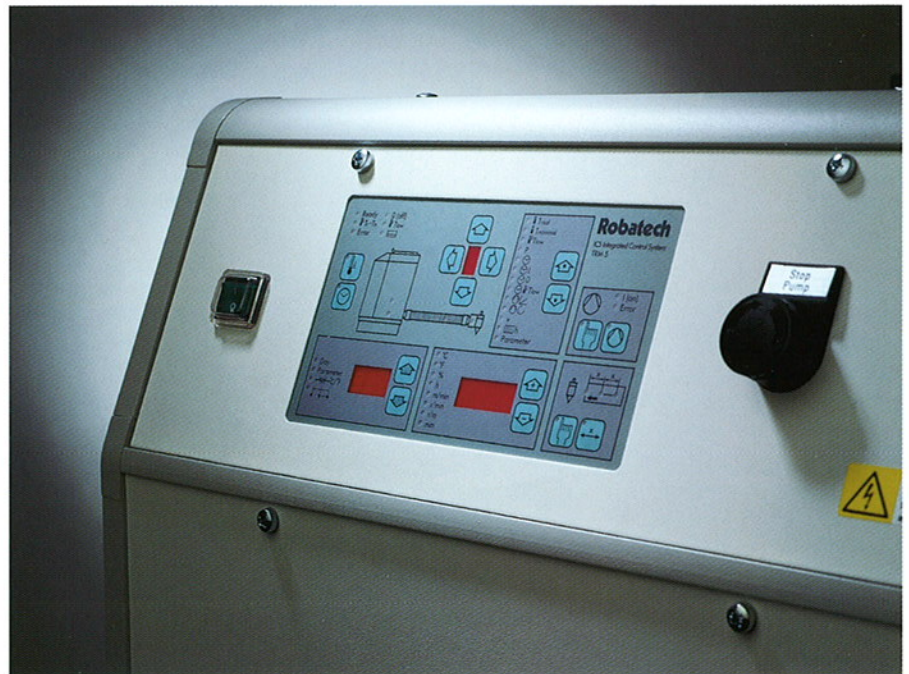
Why PUR hotmelts?

In modern product assembly applications high final strength combined with fast production is demanded.

PUR hotmelts fulfil this specification as they can be processed like normal hotmelt but because of the cross-linking they become temperature, solvent and gas resistant. They have also a good thermal stability and keep their

elasticity. PUR hotmelts allow fast processing and after reacting with humidity achieve high strength at high temperatures.

These features open many applications in the automotive, furniture, building, electrical, electronic, product assembly and other industries.



Indication and simple control of all functions of the unit using the modular keyboard

Pumelt PUR-Hotmelt Application Systems

with ICS (Integrated Control System)

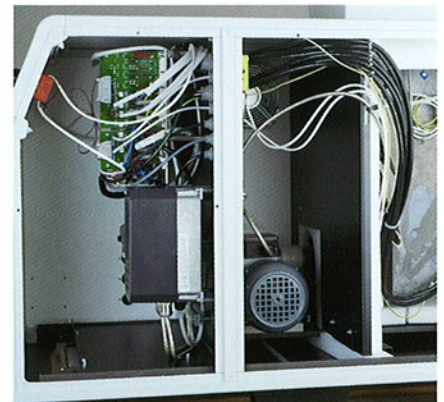
This equipment combines solid mechanical construction with state of the art electronics.

The control electronics ICS are very advanced and allow the processing of different Hotmelts such as Polyurethanes, Polyamides, Polyesters etc. by respecting the particular features of these glues.

Simple Operation

The operating elements like the main switch, pump switch, the keyboard for temperature regulation, pattern controller and timer are easily accessible and clear. To use the equipment no

special knowledge is necessary. This guarantees the fast learning of operating functions. For important functions such as activation of weekly clock, set back and system status there are direct dials. Electronic locking of the keyboard prevents tampering by unauthorised personnel.



Good accessibility to all components

Low level sensor

This electronic sensor indicates to the Operator when the tank has to be refilled.

The same sensor can be used for automatic refilling of the parent machine by a drum-unloader or a premelter unit.

Melt tank safety

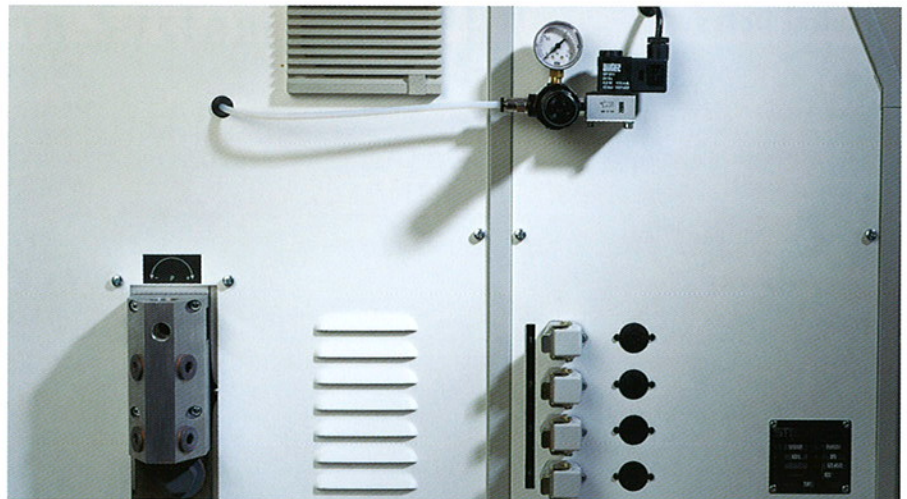
The melt tank is closed by a solid cover with integrated seal. If the cover is opened, automatically a protection layer of dry air or inert gas is injected for as long as the cover is open. The moment the lid is closed, the mode is changed to impulse dosing to reduce air consumption.

Reliable Gear pumps

The Pumelt Hotmelt units are fitted with precise and wear resistant Gear pumps. Depending of the application, you can chose between constant and adjustable pump speed. A sealed bypass protects the pump against over pressure.

Accessories

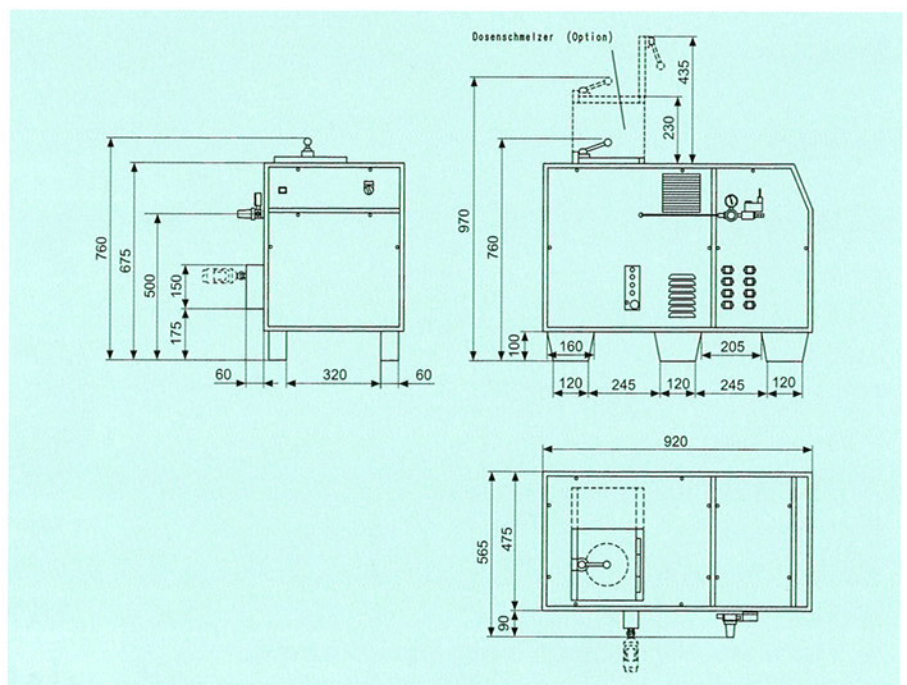
Pumelt units are compatible with all Robatech accessories.



Side view with manifold dry air dosing valve and filter



Can melter for Pumelt 18 for the processing of 2 kg cans of PIR-adhesive (optional)



Standard functions

- integrated seven day timer
- automatic set-back, automatic shutdown
- automated melting tank surveillance
- error diagnoses
- communications with PLC

Service worldwide

- fast spare part delivery
- local after sales service
- education, training
- technical support



Robatech
Glueing Technology

Technical Dates

	Typ 04	Typ 18	Typ 30
Tank capacity	4 litre	18 litre	30 litre
Tank opening	Ø 150 mm	170 x 170 mm	310 x 170 mm
Melting rate *	3 kg/h*	10 kg/h*	20 kg/h*
Number of gear pump		1	
Type of gear pump		ZP2 or ZP5	
* Pumping Rate	ZP 2	0,8... 12 kg/h	
	ZP 5	2,0... 30 kg/h	
** Pressure maximum		fix adjusted	
		Max. 50, 70 or 100 bar, depending on customer requirement	
Viscosity		100... 150'000 mPas	
Drive unit		AC-Motor / 400 VAC / 750 W	
Number of hoses		2 or 4, depending on the type of the unit	
		1/4" or 3/8" Thread with 1/4" connection	
External heating zone		4 or 8 heating zones, depending on the type of the unit	
		optional up to 16 heating zones	
Temperature range		20... 160° C / 68... 320° F	
		Tolerance ± 0,5° C	
Tank gassing		5... 6 bar, via an external air dryer	
Operating voltage		400 VAC, 3LNPE	
According to Eurostandard EN60204-1			
Supply frequency		50 / 60 Hz	
Heating power tank and pump block		2250 Watt	
*** Power consumption main unit		6... 19 kWatt	
Ambient temperature		0... 45° C or 0... 113° F	
Dimensions		see page 3	
Weight	120 kg	120 kg	135 kg
Sound pressure		< 70 dB(A)	

* Approximate value, melting rate is depending on the adhesive

** 50 bar default setting, 70 bar for packaging, 100 bar for edge banding

*** depending on the number of installed hoses and application heads

Robatech GmbH
Im Gründchen 2
D-65520 Bad Camberg / Deutschland
Phone +49 6434 94 11 0
Fax +49 6434 94 11 22
Email info@robatech.de
Internet www.robatech.de

Robatech AG
Pilatusring 10
CH-5630 Muri / Switzerland
Phone +41 56 675 77 00
Fax +41 56 675 77 01
Email info@robatech.ch
Internet www.robatech.com